

Connecting
Communities Celebrating

FILIPIN BUSINESS

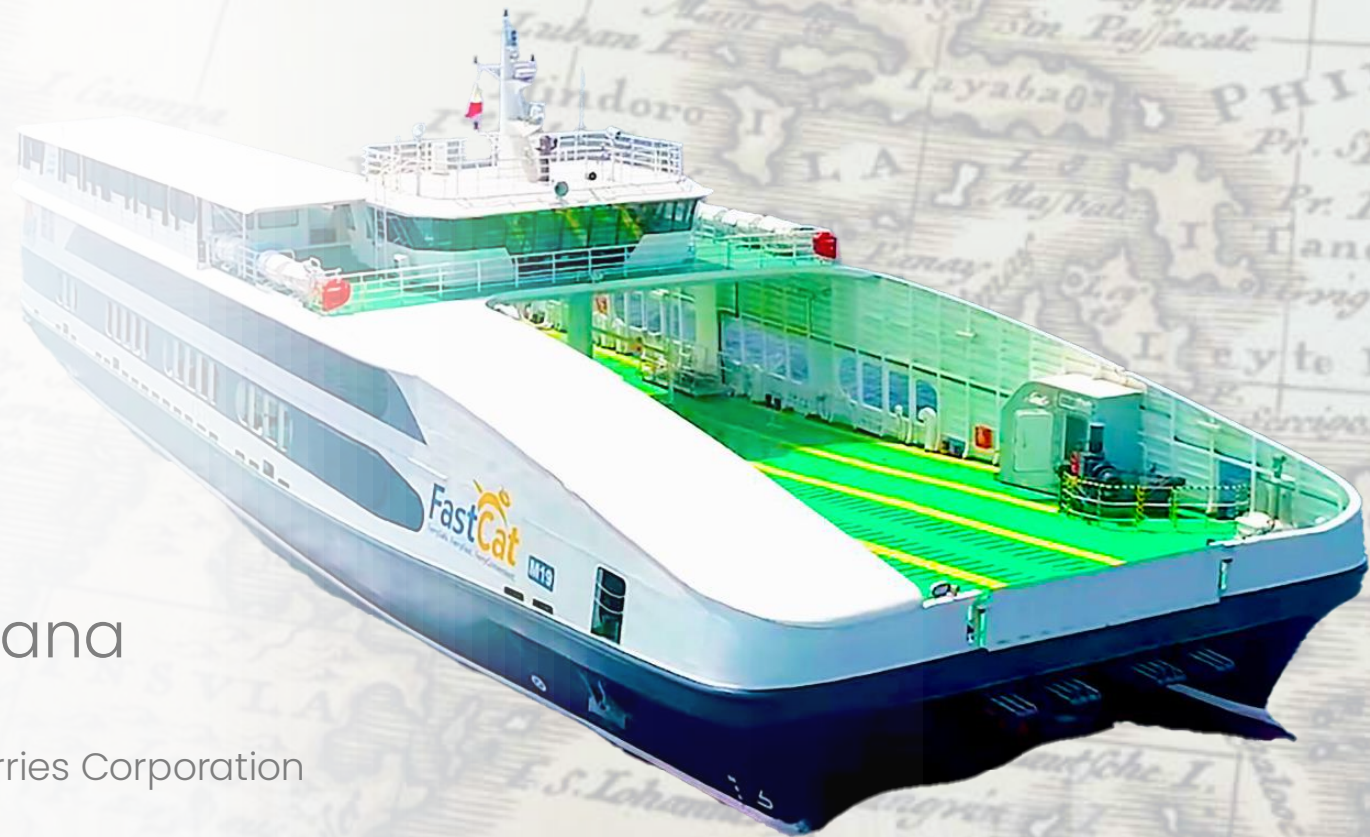
FastCat's Vision of Maritime
Connectivity and Shared Growth

Interferry 2025 Conference



Mary Ann Pastrana

Executive Vice President,
Archipelago Philippine Ferries Corporation



ADVANCING SAFETY INNOVATION CONNECTIVITY



Archipelagic Challenge

7,641

Consist of Islands

2,000

Inhabited islands

300,000

Square Kilometers

Cultural Statistics

76%

Filipinos identify **Family Togetherness** as their primary source of Happiness

4.1 Filipino Household Members

Core Filipino Values



Pakikipagkapwa

Shared identity transcending individual interests



Bayanihan

Collective action for community welfare



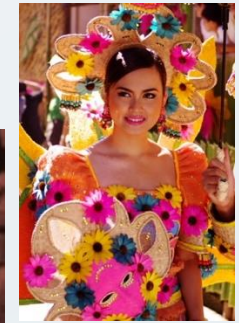
Malasakit

Deep empathy and concern for others



Kapamilya

Treating non-relatives as family members



95%

FIESTAS

Community Festivals occur in the Philippine Municipalities annually

¹ Social Weather Stations Annual Survey 2023 - <https://www.sws.org.ph/>

² Department of Tourism Cultural Heritage Database 2024 - <https://tourism.gov.ph/>

³ Philippine Statistics Authority Household Demographics 2024 - <https://psa.gov.ph/>

FastCat

FerrySafe. FerryFast. FerryConvenient.



OWN & OPERATE
30 IACS CLASS
VESSELS



Be the Leading & Preferred
Domestic Ro-Ro Shipping
in the Philippines



Achieve
Operational Excellence
Innovation, Expansion
and Drive to digitalization



Innovative and Unique
Customer Experience



Promote Local Trade,
Tourism, Agriculture, Maritime
Training & Education
and **Support** Maritime Industry
Development Plan



Open New Routes/
promote private and
public partnership with
local government unit



**Largest Fleet of Internationally-
Classed Catamaran Roll-On
Roll-Off Cargo & Passenger
Vessel**



Advocates **Green Shipping**



The Role of RORO CONNECTIVITY

From Fragmented Island to Connected Nations

The Roll-on/Roll-off (Ro-Ro) system has fundamentally transformed inter-island connectivity in the Philippines. Economic opportunities have significantly expanded through improved access to employment,



COST REDUCTION

Transportation costs decreased by 40-60% on major routes⁴



TRAVEL TIME

Journey times reduced by 25-35% compared to traditional ferry systems⁵



ECONOMIC GROWTH

Agricultural households gained higher income from the operation of these ports because both agriculture- and non-agriculture related activities were stimulated



EMPLOYMENT CREATION

Direct and indirect job creation estimated at 150,000+ positions nationwide⁶

9
ROUTES
along the
Philippine
Nautical
Highway

18
SHIPS
State-of-the-
Art, ABS Cert
Catamaran
Vessels (ABS
Certified)

9
ROUTES
along the
Philippine
Nautical
Highway

2.4
PASSENGERS
Served 2 Million
and 400 K Rolling
Cargo



FOOD Travels

CULTURE Connect



Iloilo Butterscotch

This bite-sized, chewy butter mix topped with cashew nuts is a charming partner for dessert or snack time.



Bicol Pili Nuts

Distinctive Pili Nuts from Bicol, offered on the Matnog-Dapdap route.



Banana Chips and Suman

Suman sa Lihiya and Banana Chips from Mindoro, now enjoyed on the Cebu-Tubigon route.



¹⁰Fernandez, D. G. (1994). *Tikin: Essays on Philippine Food and Culture*. Anvil Publishing.
¹¹Alegre, E. D., & Fernandez, D. G. (1991). *Sarap: Essays on Philippine Food*. Mr. & Ms. Publishing.
¹²Zialcita, F. N. (2005). *Authentic Though Not Exotic: Essays on Filipino Identity*. Ateneo de Manila University Press.



CULTURAL BRIDGE



PASALUBONG TRADITION

Products range from local delicacies to handicrafts. Creates economic opportunities for producers in origin communities².



STORYTELLING / INFO

SHARE Creates informal networks spanning multiple islands³. Facilitates knowledge transfer between communities.



SOCIAL INTEGRATION IMPACT

Inter-island Marriages: 23% increase in marriages between residents of different islands on FastCat routes²

*Turner, V. (1969). The Ritual Process: Structure and Anti-Structure. Aldine Publishing.
Cannell, F. (1999). Power and Intimacy in the Christian Philippines. Cambridge University Press.
Rafael, V. L. (2000). White Love and Other Events in Filipino History. Duke University Press.*



TOURISM

and Community Impact

72.3%

Domestic Tourism Expenditures
from ₱1.55 trillion in 2022 to ₱2.67 trillion in 2023.

87.7%

Highest Growth on Record
(foreign visitors + overseas Filipinos) hit ₱697.46 billion

10 %

Outbound Tourism Expenditures
tourism expenditure also grew 10%, reaching ₱208.25 B

75.3%

Internal Tourism Expenditures
totaled ₱3.36 trillion, up 75.3% from 2022.





At the heart of our
CONNECTION is our
PEOPLE





Mary Ann Pastrana

Chair, Archipelago Philippine Ferries Corporation

Thank You