

# GIOVE

# JET



LAURO  
HOLDING



WE ARE  
ALILAURO

# WE ARE A LEGACY OF MARITIME EXCELLENCE



- **Founded** in 1944 by Agostino Lauro, Alilauro began with a pioneering spirit, establishing vital connections in the Gulf of Naples.
- **Part of Lauro Holding:** Alilauro S.p.A. is a core subsidiary of Lauro Holding, a group of 20 companies engaged in maritime transport, shipbuilding, technological innovation, and hospitality.
- **Extensive Network:** We provide year-round and seasonal connections to Ischia, Capri, the Sorrentine Peninsula, the Amalfi Coast (Amalfi & Positano), and the Aeolian Islands, linking them to Naples and Salerno.
- **Commitment to the Future:** Guided by the third generation of the Lauro family, we blend tradition with innovation, striving to provide exceptional travel experiences.



VOLVO PENTA



**Destinations  
connected to date**



**5 milioni**  
**Passengers carried yearly  
by our Group**



Daily connections with **Ischia**,  
**Capri**, the **Amalfi coast**, the  
**Sorrentine Peninsula**, **Positano**, the  
**Aeolian Islands**, either all year  
round or through seasonal lines.



**Ships in service**



**500.000**  
**Nautical miles sailed  
per annum**



**VOLVO PENTA**



**Overall GHG emission reduction and - 18% of CO2 emissions**



**90% reduction of SOx and NOx emitted**



**Minimisation Acoustic pollution**

# WE ARE GREEN



**Energy efficiency: - 18% fuel consumption y-o-y**



**Compliance with the latest international regulations**



**Optimisation and real time monitoring of consumptions and performance**



**V O L V O P E N T A**

# **FROM ENGINEERING TO SEA TRIALS**

## **A REPOWERING HISTORY IN 4 POINTS**



**V O L V O P E N T A**

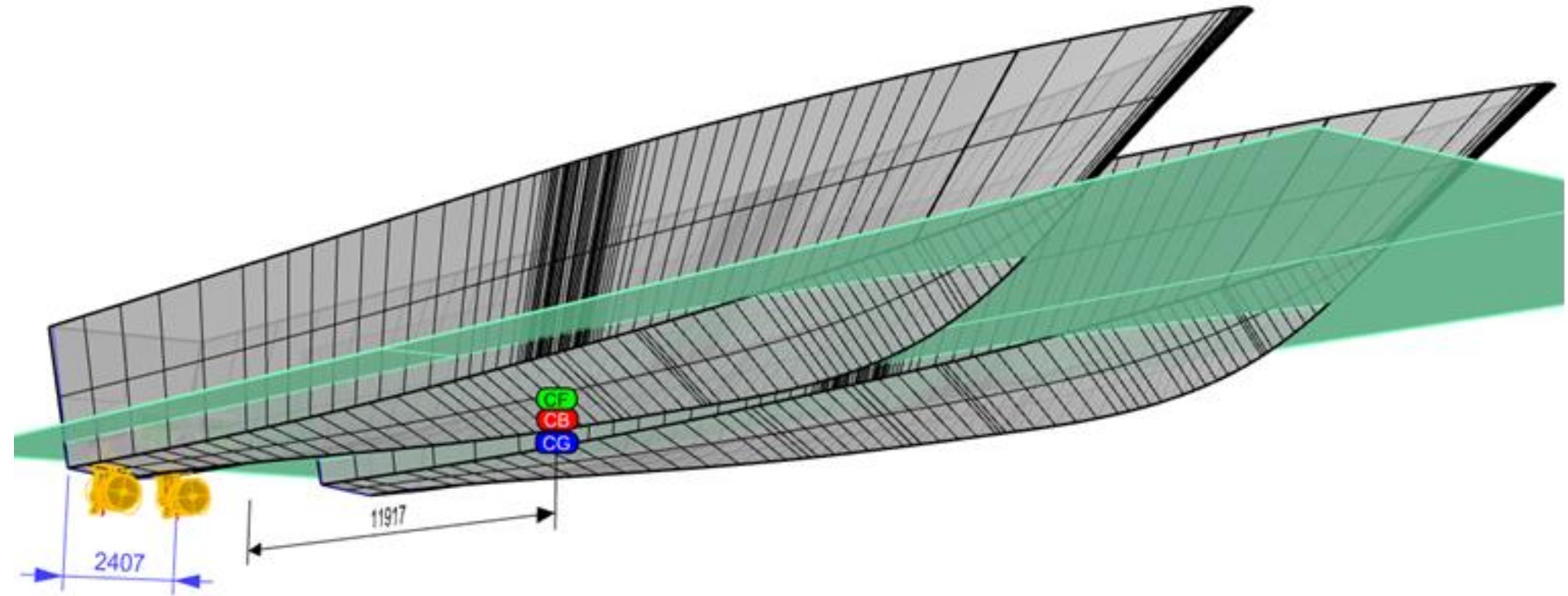
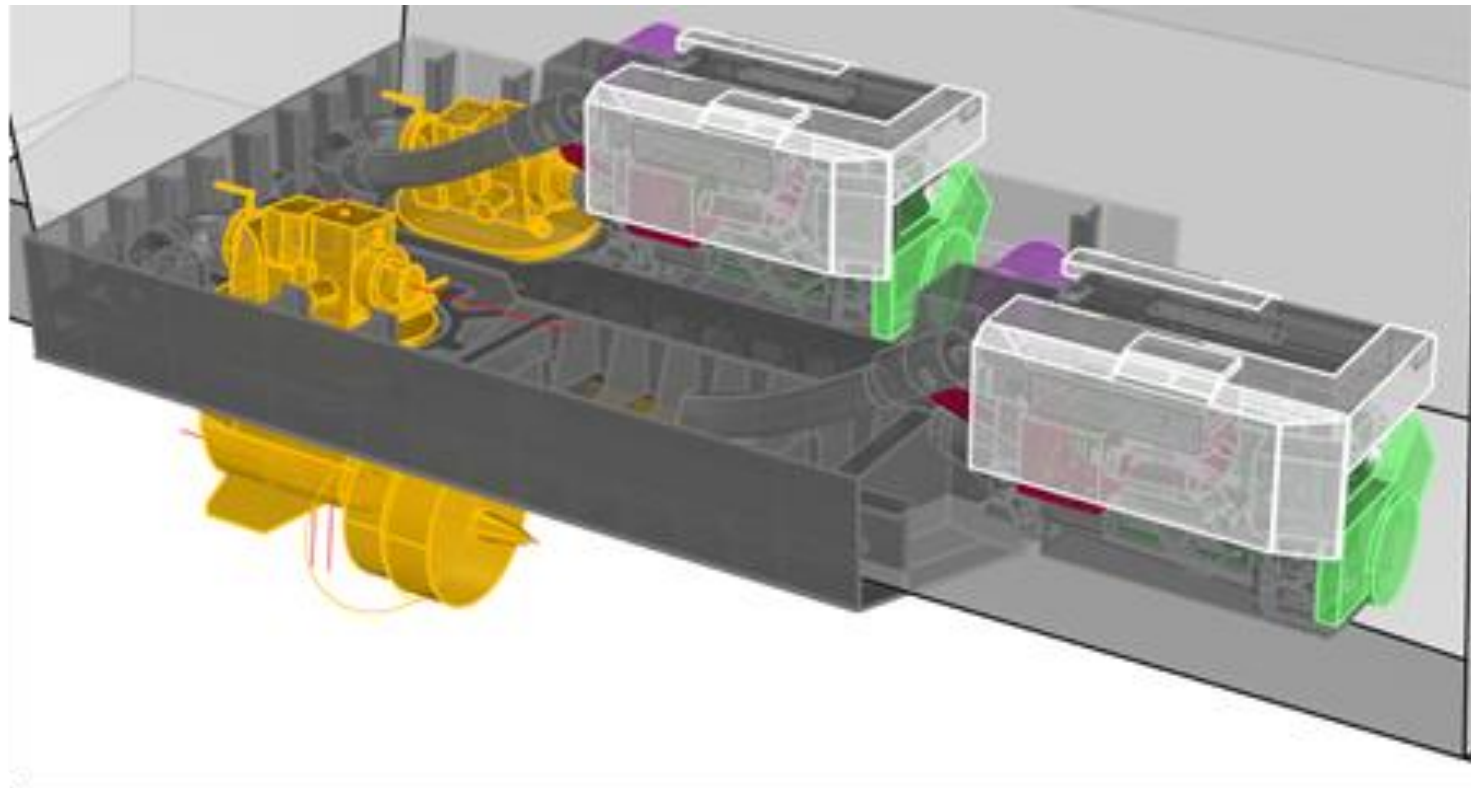


BOAT DATA	
Boat builder:	Marinteknik Verkstadts AB
Boat model:	Alilauro Giove Jet
Hull type:	Multihull
Propulsion type:	IPS
Country:	Italy
Hull Id:	B55
Draft:	
LOA:	33 m / 108.3 ft
LWL:	
BOA:	9.3 m / 30.5 ft
BWL:	
Fuel tank capacity:	6600 l / 1743.5 gal
Water tank capacity:	500 l / 132.1 gal
Deadrise angle:	
Trim device type:	Interceptor IS
Trim device size:	4 x IS1050

ENGINE & TRANSMISSION DATA	
Engine make:	Volvo Penta
Engine model:	4 x D13-IPS1050 IMO III
Fuel type:	Diesel
Rated engine speed:	2300 RPM
Output crankshaft:	588 kW / 799 hp
Transmission make:	Volvo Penta
Transmission model:	IPS 30
Gear ratio:	1.99
Propeller type:	Q4
Propeller diameter:	
Propeller pitch:	
No of prop. blades:	
Blade area ratio:	



# FROM ENGINEERING TO SEA TRIALS



**THE REPOWERING PROJECT STARTS WITH SHARING INFORMATION, TO IDENTIFY THE BEST PROPULSION PACKAGE, THE POSITIONING ONBOARD AND ALL THE TECHNICAL AND INSTALLATION DETAILS**

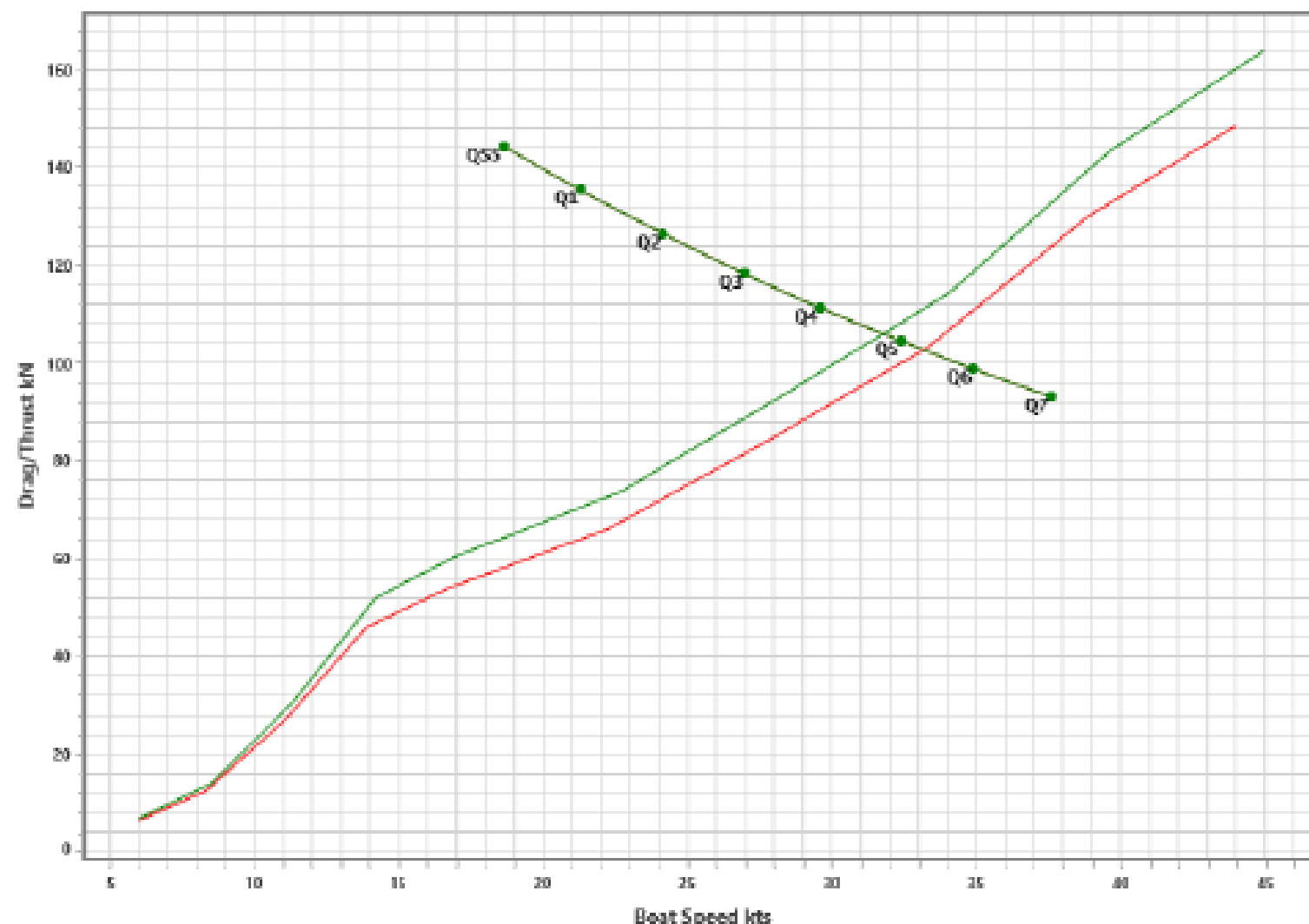
1



VOLVO PENTA

# FROM ENGINEERING TO SEA TRIALS

Graph type 9 - Drag/Thrust vs Boat Speed



■ LC1 75000Kg @ LCG 11,9m - IPS 1050 ■ LC2 86000Kg @ LCG 11,9m - IPS 1050

## Results

Estimated max speed	33.1 kts
Propeller efficiency	78 %
Drag/thrust	102.49 kN
Effective power	1746.9 kW
Propeller name	Q5

## Results

Estimated max speed	31.8 kts
Propeller efficiency	78 %
Drag/thrust	106.09 kN
Effective power	1735.6 kW
Propeller name	Q5

## VOLVO PENTA RELEASES A PERFORMANCES EVALUATION DOCUMENT

2



VOLVO PENTA

# FROM ENGINEERING TO SEA TRIALS



**ALL THE COMPONENTS ARE PROVIDED BY VOLVO PENTA:  
ENGINES, PODS, PROPELLERS, EXHAUST, STEERING, CONTROLS, IMO III SYSTEM, INTERCEPTORS.  
ALL THE CONSTRUCTION PHASES ARE CHECKED TOGETHER WITH THE SHIPYARD**

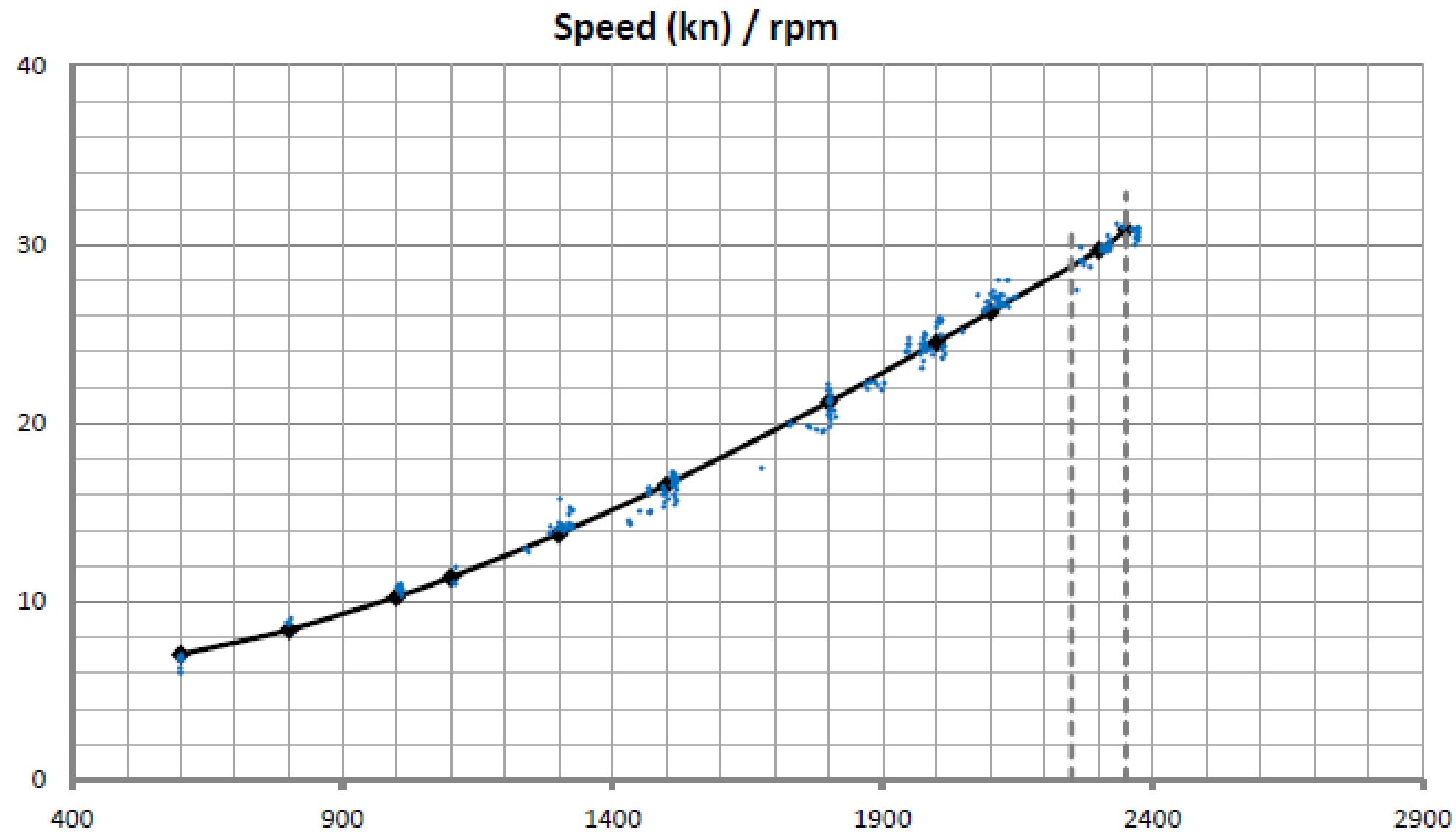
3



VOLVO PENTA

# FROM ENGINEERING TO SEA TRIALS

## BOAT PERFORMANCE



Engine rpm	Speed kn	Fuel l/h per engine	Trim deg	% Fuel / full load
600	7,1	4,6	--	20%
800	8,4	12,6	--	21%
1000	10,3	20,2	--	28%
1100	11,4	24,2	--	30%
1300	13,8	33,2	2,2	35%
1500	16,6	44,7	3,2	40%
1800	21,2	69,0	2,4	51%
2000	24,5	91,5	2,2	65%
2100	26,2	105,1	--	74%
2300	29,7	137,7	1,7	94%

Max

Average Values

2351	30,9	144,6	1,7	98%
------	------	-------	-----	-----

4

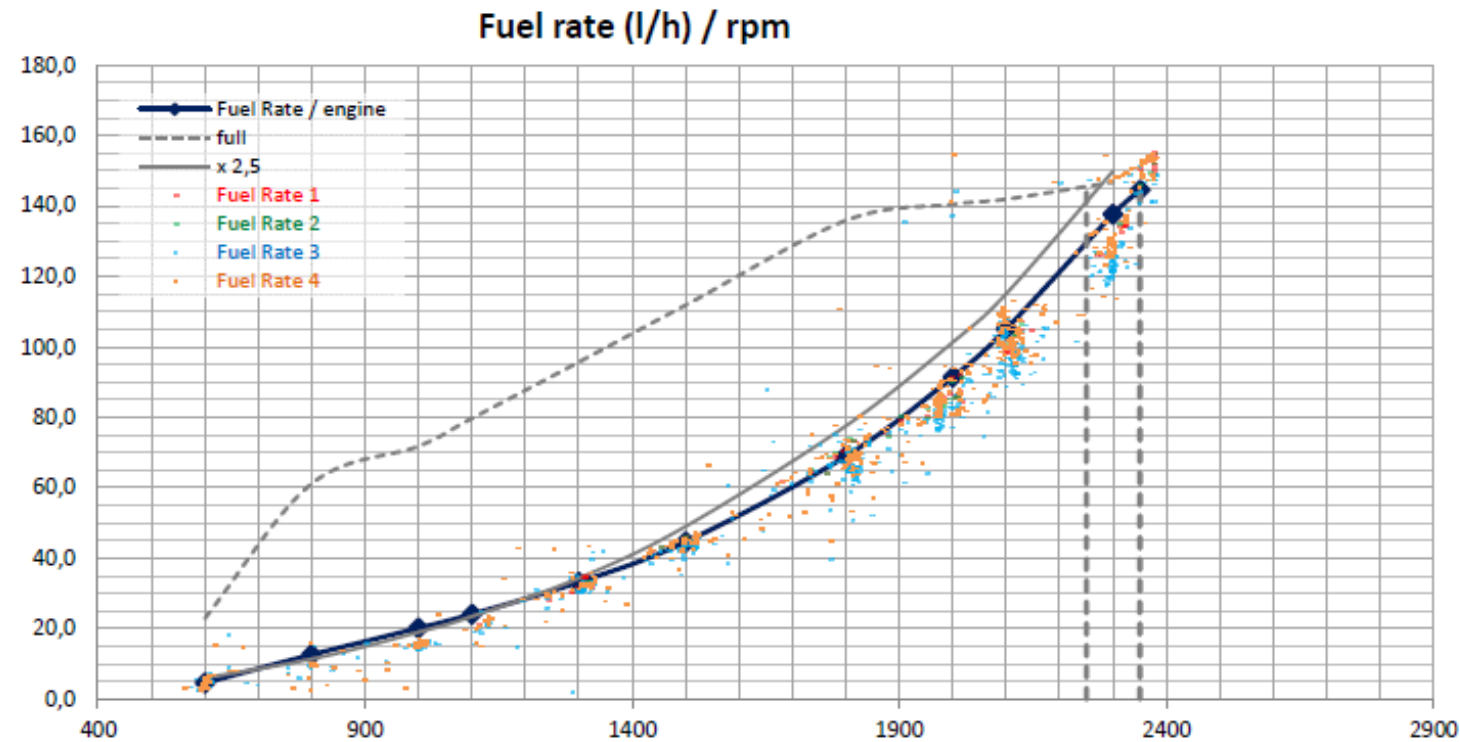
## A FINAL SEA TRIAL IS PERFORMED TO CONFIRM PREDICTIONS



VOLVO PENTA

# FROM ENGINEERING TO SEA TRIALS

## FUEL CONSUMPTION

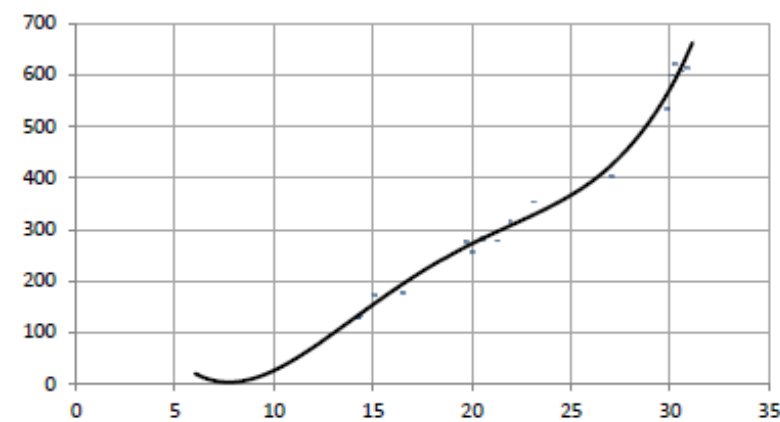


Engine rpm	Speed kn	Fuel l/h per eng.	Fuel l/h Total x4
600	7,1	4,6	18,6
800	8,4	12,6	50,5
1000	10,3	20,2	80,8
1100	11,4	24,2	96,7
1300	13,8	33,2	132,9
1500	16,6	44,7	178,8
1800	21,2	69,0	275,9
2000	24,5	91,5	366,0
2100	26,2	105,1	420,4
2300	29,7	137,7	550,7

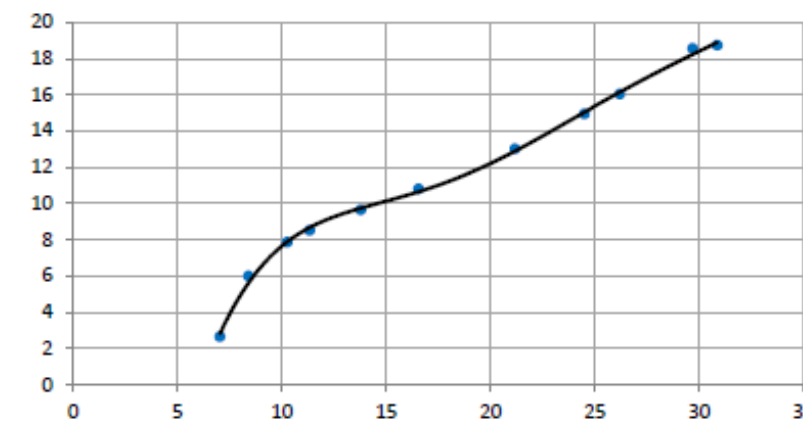
Max Average	2351	30,9	144,6	578,4
-------------	------	------	-------	-------

Engine Nominal	2100	--	142,0	(98 %)
	2300	--	146,8	

Total Fuel (l/h) - Speed (Kn)



Fuel Rate (l/nm) - Speed (kn)



**A FINAL SEA TRIAL IS PERFORMED TO CONFIRM PREDICTIONS**

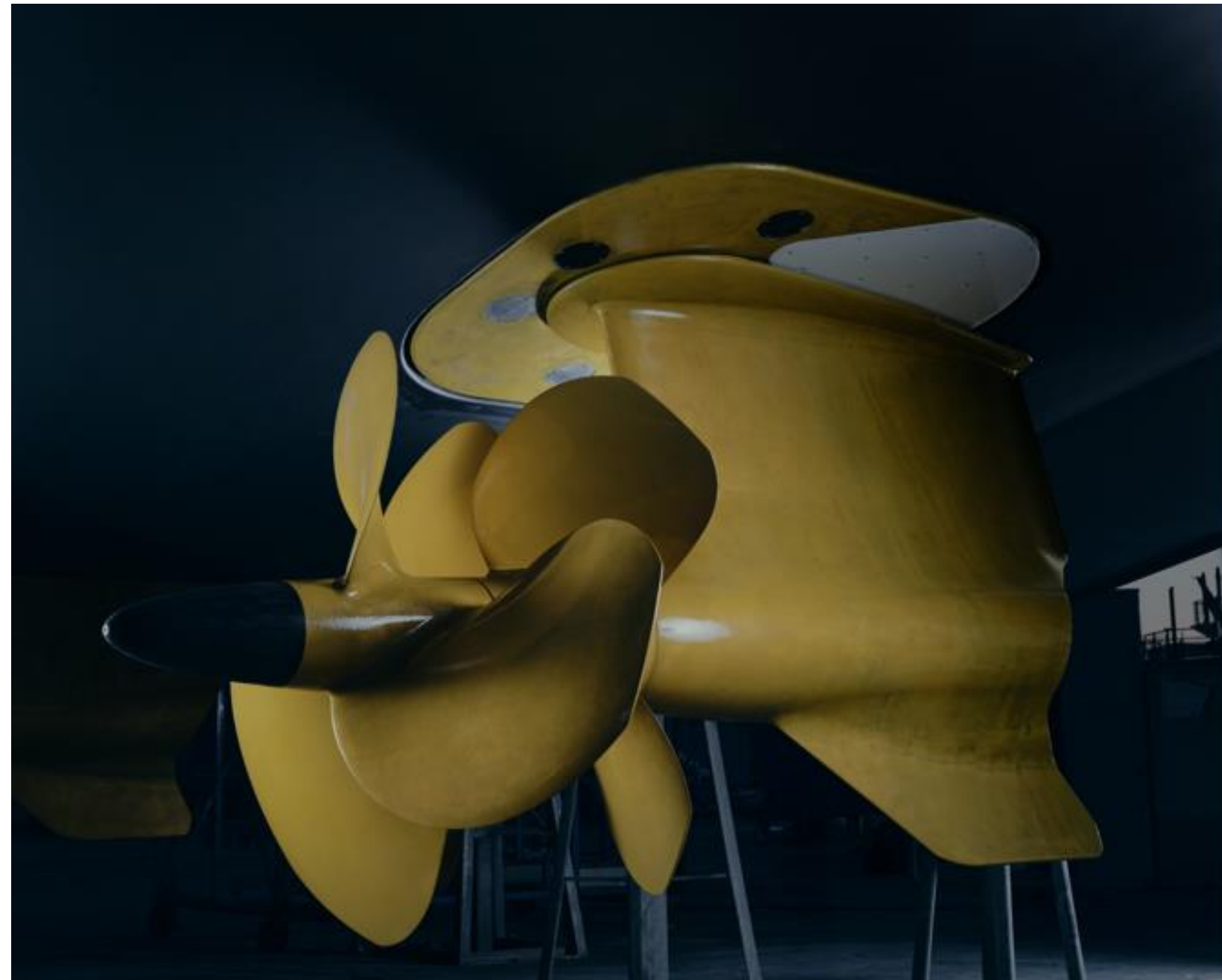
4



VOLVO PENTA

# FROM ENGINEERING TO SEA TRIALS

THE ADVANTAGES OF A UNIQUE PARTNER FOR ALL THE PROPULSION PACKAGE



“EFFICIENCY THROUGH PARTNERSHIP”



VOLVO PENTA